

Catastrophic extinction of Caribbean rudist bivalves at the Cretaceous-Tertiary boundary

Thomas Steuber* Institut für Geologie, Mineralogie und Geophysik, Ruhr-Universität, 44801 Bochum, Germany
Simon F. Mitchell Department of Geography and Geology, University of the West Indies, Mona, Kingston 7, Jamaica
Dieter Buhl Institut für Geologie, Mineralogie und Geophysik, Ruhr-Universität, 44801 Bochum, Germany
Gavin Gunter Department of Geography and Geology, University of the West Indies, Mona, Kingston 7, Jamaica
Haino U. Kasper Geologisches Institut, Universität zu Köln, Zùlpicher Strasse 49a, 50674 Köln, Germany

ABSTRACT

Strontium isotope ratios ($^{87}\text{Sr}/^{86}\text{Sr}$) in pristine low-Mg calcite of shells of rudist bivalves from the *Titanosarcollites* limestones exposed in the Central, Maldon, and Marchmont inliers of Jamaica indicate that species-rich rudist-coral associations persisted into the latest Maastrichtian (66–65 Ma). This finding contradicts the currently accepted hypothesis of stepwise extinction of rudist bivalves in the middle Maastrichtian and argues for a catastrophic, impact-related demise of Caribbean Cretaceous reefal ecosystems at the Cretaceous-Tertiary boundary.

Keywords: Jamaica, Maastrichtian, chemostratigraphy, $^{87}\text{Sr}/^{86}\text{Sr}$, rudists, Cretaceous-Tertiary boundary.

INTRODUCTION

The timing and pattern of biotic extinctions in the Late Cretaceous leading up to the Cretaceous-Tertiary (K-T) boundary in tropical carbonate platforms and reefal ecosystems is poorly defined globally owing to imprecise biostratigraphic control (Johnson and Kauffman, 1996; MacLeod et al., 1997; Philip, 1998). During the Late Cretaceous, extensive carbonate platforms were present in the Caribbean, and because of their proximity to the Yucatan site of impact of a large extraterrestrial body at the K-T boundary (Alvarez et al., 1980; Smit, 1999), they should have been severely affected by impact-related environmental perturbations. However, reefal ecosystem decline and the demise of rudist bivalves in the Caribbean have previously been attributed to stepwise extinction in the middle Maastrichtian, possibly caused by sea-level changes and climatic deterioration (Jiang and Robinson, 1987; Johnson and Kauffman, 1996, 2001; Johnson et al., 1996).

Upper Cretaceous carbonate sequences in the Caribbean are well developed on the island of Jamaica (Kauffman and Sohl, 1973), and these sections have been critical in determining the patterns of rudist bivalve extinction during the Maastrichtian (Jiang and Robinson, 1987; Johnson and Kauffman, 1996). The Cretaceous succession is exposed in several inliers, but is buried beneath Tertiary limestones elsewhere on the island. The inliers contain successions consisting of conglomerates, sandstones, shales, and limestones; the limestones contain the *Titanosarcollites* rudist fauna (Fig. 1), the youngest

rudist assemblage in the Caribbean region (Chubb, 1971; Johnson and Kauffman, 1996; Gunter, 2002). Although the stratigraphy of individual inliers is well known (e.g., Coates, 1965; Jiang and Robinson, 1987; Mitchell, 1999; Mitchell and Blissett, 2001), detailed correlation between inliers, and with international stages, is difficult because of the endemic nature of much of the fauna.

To determine the age of the *Titanosarcollites* limestones in these inliers, we analyzed strontium isotope ratios in the diagenetically most stable form of biological carbonate, low-Mg calcite, in shells of rudist bivalves from localities in the Central, Maldon, Marchmont, and Jerusalem Mountain inliers of Jamaica (Fig. 2). Variation of this isotope ratio in seawater during the Late Cretaceous and Tertiary is known in detail (McArthur et al., 1998, 2000, 2001; MacLeod et al., 2001) and provides a precise tool for global stratigraphic correlation (Veizer et al., 1997). Owing to the long residence time of Sr in seawater, the $^{87}\text{Sr}/^{86}\text{Sr}$ values in waters of normal marine salinity are globally uniform, so the $^{87}\text{Sr}/^{86}\text{Sr}$ values of diagenetically unaltered carbonates can be used to derive pre-



Figure 1. Bedding-plane view of *Titanosarcollites* with both valves conjoined, Maldon inlier near Shaw Castle. Diameter of lens cap is 53 mm.

cise numerical ages. This method avoids problems of conventional biostratigraphy, such as correlation between different faunal provinces or endemic associations (Hazel and Kamiya, 1993), and has been increasingly used as a tool for global stratigraphic correlation (McArthur, 1994; Steuber, 2001).

MATERIALS AND METHODS

Samples were drilled with tungsten instruments (0.6 mm diameter) from polished sections of well-preserved areas of the outer shell layer of valves of the rudist genera *Plagioptychus*, *Hippurites*, and *Chiapasella* and from oyster shells. Diagenetic calcite, either as void-filling precipitate or as replaced aragonite, was also sampled. We analyzed 58 samples from 27 specimens of rudists and oys-

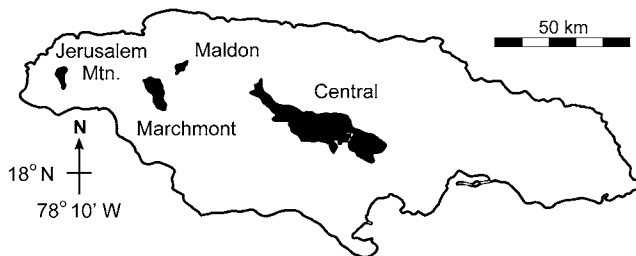


Figure 2. Locations of Cretaceous inliers in Jamaica from which samples were analyzed.

*E-mail: thomas.steuber@ruhr-uni-bochum.de.

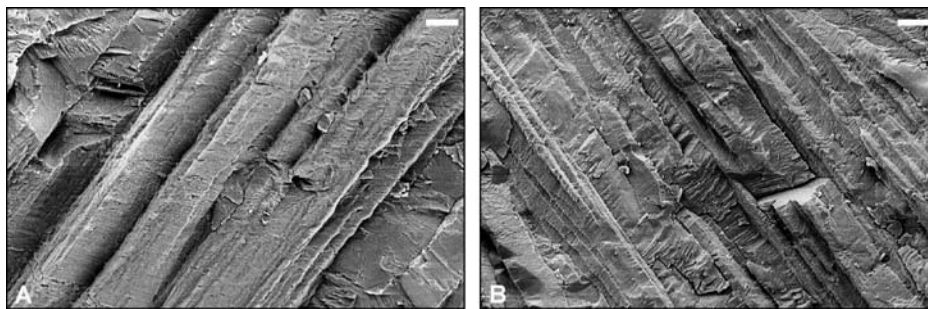


Figure 3. Scanning electron microscope images of fibrous prismatic ultrastructure in outer-shell layer of *Plagiocythchus*. **A:** Sample C546, Central inlier, Rio Minho section, level F1; scale bar represents 10 μm . **B:** Sample C593, Maldon inlier, locality 13; scale bar represents 20 μm .

ters¹. Element concentrations were measured with inductively coupled plasma–mass spectrometry (ICP-MS) on splits of samples submitted for Sr isotope analyses. Sr was separated by standard ion-exchange methods, and isotope ratios were analyzed on a Finnigan MAT 262 thermal-ionization mass spectrometer. Isotope ratios were normalized to an $^{86}\text{Sr}/^{88}\text{Sr}$ value of 0.1194. The long-term mean of $^{87}\text{Sr}/^{86}\text{Sr}$ of modern seawater (USGS EN-1) measured in 2000–2001 at the Bochum isotope laboratory is 0.709 146 ($n = 68$, 2 s.e. [standard error] = 2×10^{-6}), and the mean of standards run together with samples analyzed for this study is 0.709 143 ($n = 8$, 2 s.e. = 4×10^{-6}). The $^{87}\text{Sr}/^{86}\text{Sr}$ ratios of samples are adjusted by $+29 \times 10^{-6}$ to a value of 0.709 175 of USGS EN-1, to derive numerical ages from the look-up table of McArthur et al. (2001). Interlaboratory comparison of samples, including latest Cretaceous biological calcite, has proven the correctness of this approach, which is critical for the precise derivation of numerical ages (McArthur et al., 2001).

RESULTS

Preservation of Original Sr Isotope Ratios

The original seawater $^{87}\text{Sr}/^{86}\text{Sr}$ values of skeletal carbonate can be altered by diagenesis, and samples must be carefully screened for such effects. Scanning electron microscopy (SEM) shows that the low-Mg calcite outer shell layer of the rudists analyzed has well-preserved, fibrous, prismatic ultrastructure (Fig. 3). Because the state of preservation can vary significantly between different areas of a single shell, the elemental composition of splits of samples analyzed for Sr isotope ratios was used to select the best-preserved samples. Diagenesis of low-Mg calcite typically involves decreasing Sr and increasing Fe and Mn concentrations (Veizer, 1983). This pattern

is clearly seen in the samples analyzed (Fig. 4). Below a threshold of 20 $\mu\text{g/g}$ Mn and 200 $\mu\text{g/g}$ Fe, $^{87}\text{Sr}/^{86}\text{Sr}$ values of samples from each locality are constant within the range of analytical error. This concordance of $^{87}\text{Sr}/^{86}\text{Sr}$ values of samples obtained from different parts of single shells and/or from several shells from each locality (Table 1) argues for a preservation of original seawater $^{87}\text{Sr}/^{86}\text{Sr}$ values, because alteration characteristically proceeds patchily (McArthur, 1994). Sr concentrations of these samples range from 1270 to 1643 $\mu\text{g/g}$, characteristic of Late Cretaceous rudist calcite (Steuber, 1999, 2002). Consequently, numerical ages were derived only from the $^{87}\text{Sr}/^{86}\text{Sr}$ values of samples that had Mn and Fe concentrations below 20 and 200 $\mu\text{g/g}$, respectively (Table 1). Although other samples with elevated Mn and Fe concentrations had $^{87}\text{Sr}/^{86}\text{Sr}$ values within the range of best-preserved calcite (Fig. 4), these have been excluded from the calculation of numerical ages. This approach may have eliminated samples in which the original Sr isotopic composition is still preserved, because Fe and Mn may derive from oxyhydroxide coatings within the shells instead of being structurally bound in the calcite (McArthur, 1994). Because $^{87}\text{Sr}/^{86}\text{Sr}$ values decrease only slightly with increasing Mn and Fe concentrations (Fig. 4), the chosen threshold appears to be justified, because minor diagenetic shifts of isotope ratios may have otherwise remained unnoticed. No sample from oyster shells matched the criteria just discussed, and there is considerable scatter in their $^{87}\text{Sr}/^{86}\text{Sr}$ values, although original shell structures are well preserved.

Most samples with high Mn and Fe concentrations have lower $^{87}\text{Sr}/^{86}\text{Sr}$ values than best-preserved rudist shells. Diagenetic calcite, either as void-filling precipitate or as replaced aragonite of the inner shell layers of rudists, has the lowest $^{87}\text{Sr}/^{86}\text{Sr}$ values among the samples analyzed (Table 1). Such a trend is expected in a diagenetic environment where the Sr of pore fluids is derived predominantly from island-arc-type volcanoclastic sediments that are intercalated with rudist-coral lime-

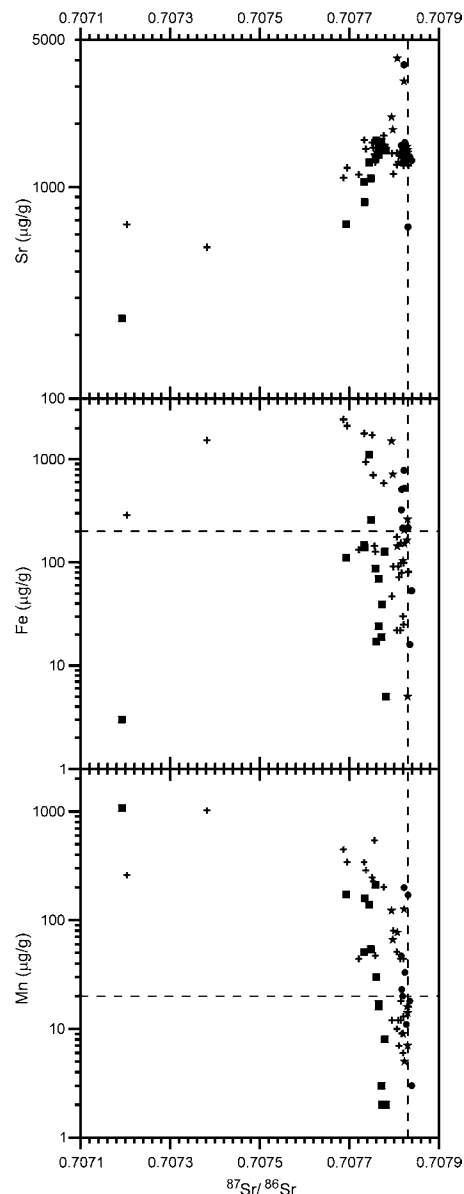


Figure 4. Sr, Fe, and Mn concentrations vs. $^{87}\text{Sr}/^{86}\text{Sr}$ values in samples analyzed from Central (crosses), Maldon (circles), Jerusalem Mountain (boxes), and Marchmont (stars) inliers (see text footnote 1). Three samples with lowest $^{87}\text{Sr}/^{86}\text{Sr}$ values are from diagenetic calcite. Vertical broken line indicates highest Late Cretaceous $^{87}\text{Sr}/^{86}\text{Sr}$ value of seawater that occurs near Cretaceous-Tertiary boundary (McArthur et al., 2001). Horizontal broken lines indicate thresholds of Mn and Fe concentrations on which selection of best-preserved samples was based.

stones of Jamaica (Mitchell, 1999) and that typically have low, mantle-dominated $^{87}\text{Sr}/^{86}\text{Sr}$ values. Consequently, diagenesis would have shifted the original seawater composition of rudist shells to lower $^{87}\text{Sr}/^{86}\text{Sr}$ values that would result in higher numerical ages (Fig. 5).

Numerical Ages

Compared with the $^{87}\text{Sr}/^{86}\text{Sr}$ reference curve for Cretaceous seawater (McArthur et

¹GSA Data Repository item 2002118, Analytical results of low-Mg calcite of shells of rudist bivalves from Jamaica, is available on request from Documents Secretary, GSA, P.O. Box 9140, Boulder, CO 80301-9140, USA, editing@geosociety.org, or at www.geosociety.org/pubs/ft2002.htm.

TABLE 1. ANALYTICAL RESULTS OF LOW-Mg CALCITE OF RUDIST BIVALVES FROM JAMAICA AND DERIVED NUMERICAL AGES

Locality, sample no.*	⁸⁷ Sr/ ⁸⁶ Sr	±2 s.e. (× 10 ⁻⁶)	Sr	Mg (μg/g)	Fe	Mn	Age† (Ma)
Central inlier							
Rio Minho section§ (N18°09'22"; W77°22'47")							
Lower C							
C551	0.707806	6	1454	1265	176	51	
C551/2	0.707806	6	N.D.	N.D.	N.D.	N.D.	
mean	0.707806	8					>66.21 66.68 <67.46
D1							
R1089/1	0.707820	6	1432	1083	30	6	
R1089/2	0.707795	5	1448	1144	47	12	
R1089/3	0.707811	7	1419	1065	72	7	
mean	0.707809	7					>66.13 66.55 <67.17
D25							
C598/1	0.707815	7	1471	861	154	12	
C598/2	0.707809	6	1321	1066	91	12	
C598/3	0.707815	5	1428	950	98	18	
mean	0.707813	7					>65.95 66.39 <66.91
F1							
C547/1	0.707821	7	1302	594	99	13	
C547/2	0.707832	6	1270	599	81	16	
mean#	0.707827	8					65.78 <66.31
Logie Green (N18°09'34"; W77°25'44")							
R1081/1	0.707806	6	1279	1055	22	10	
R1081/2	0.707817	7	1309	1285	79	9	
mean	0.707812	8					>65.95 66.43 <67.03
Jerusalem Mountain inlier							
Loc. 17 (N18°19'34"; W78°13'48")							
C562/2	0.707765	7	1544	924	24	17	
C564/2	0.707782	6	1489	689	5	2	
C564/3	0.707772	7	1643	842	19	3	
mean	0.707773	7					>68.30 69.05 <69.70
Loc. 18 (N18°19'29"; W78°13'49")							
C561	0.707773	6	1506	891	39	2	
C561/2	0.707779	6	1547	1057	127	8	
C561/3	0.707765	7	1422	1310	69	16	
mean	0.707772	7					>68.37 69.12 <69.76
Maldon inlier							
Loc. 13 (N18°19'58"; W77°48'41")							
C578	0.707827	6	1360	2284	0	11	
C578/3	0.707839	6	1341	1021	53	3	
C593	0.707835	7	1389	801	16	18	
C593/2	0.707838	7	N.D.	N.D.	N.D.	N.D.	
mean#	0.707835	5					<65.83
Marchmont inlier							
Loc. 20 (N18°17'56"; W77°54'49")							
C581#	0.707823	12	1341	1035	151	5	65.99 <66.63
Loc. 23 (N18°15'40"; W77°52'56")							
C582	0.707830	6	1460	712	5	7	
C582/2	0.707829	7	1564	1322	164	16	
C582/3	0.707820	6	1396	1154	104	9	
mean	0.707826	7					>65.06 65.84 <66.31

*Extensions of sample numbers following slashes indicate samples taken from different parts of the same shell.

†Numerical ages derived from McArthur et al. (2001), following the method of McArthur et al. (2000). Upper and lower age limits were obtained by adding two standard errors (s.e.) of the mean value of isotopic results from each locality to the statistical uncertainty of the seawater curve (Fig. 5). For most localities, fewer than four values were available, and uncertainty was considered to be twice the standard error of the mean value of USGS EN-1 run together with samples (±0.000012, ±0.000008, or ±0.000007, for n = 1, 2, and 3, respectively).

§Sample levels of the Rio Minho section are rhythms or divisions (Mitchell, 1999).

#No mean value or lower age limit is obtained from the look-up table for ⁸⁷Sr/⁸⁶Sr values close to the maximum Late Cretaceous ratio near the Cretaceous-Tertiary boundary.

al., 2001), all analyses of rudist shells from the *Titanosarcolites* limestones of Jamaica indicate a latest Maastrichtian age, with the exception of rudist formations of the Jerusalem Mountain inlier that were deposited close to the lower Maastrichtian–upper Maastrichtian boundary (Fig. 5). The age of rudist-coral associations from the Jerusalem Mountain inlier corresponds with previous biostratigraphic data obtained from nannofossils (Jiang and Robinson, 1987). No reliable numerical age was obtained from the Sr

isotope composition of shells from the Oyster Limestone, which was thought to overlie the Jerusalem Mountain rudist limestones and was interpreted to reflect the middle Maastrichtian extinction event (Johnson and Kauffman, 1996). The most continuous section of Maastrichtian limestones (Guinea Corn Formation) is exposed in the bed of Rio Minho (Mitchell, 1999). The increase of mean ⁸⁷Sr/⁸⁶Sr values of samples from four successive levels of the section supports our assumption that the original seawater ⁸⁷Sr/

⁸⁶Sr signature is well preserved in those samples that have been selected to derive numerical ages, although data on elemental composition from samples of the lowest level are not decisive. The highest sample is from a level 36 m below the top of the Guinea Corn Formation and yielded an age of 65.8 Ma. Logie Green is the type locality of several rudist species, among them the type species of genera that have numerous records elsewhere in the New World such as *Titanosarcolites* and *Chiapasella*. According to Sr isotope stratigraphy, this locality can be correlated with the middle part of the Rio Minho section (Fig. 5). The youngest age was obtained from the *Titanosarcolites* limestone of the Vaughansfield Formation exposed in the Maldon inlier (Fig. 5; Table 1). Samples from there have a mean ⁸⁷Sr/⁸⁶Sr value of 0.707835 ± 5 × 10⁻⁶, which is within analytical uncertainty of the values of 0.707828 ± 3 × 10⁻⁶ and 0.707832 ± 7 × 10⁻⁶ given for the K-T boundary in Europe and Antarctica, respectively, by McArthur et al. (1998).

DISCUSSION

The data presented here provide, for the first time, precise ages for the *Titanosarcolites* limestones and indicate that species-rich associations of rudist bivalves—as well as numerous groups of associated benthos that thrived in the shallow-water, tropical marine environments of the Caribbean—persisted into the latest Maastrichtian. This finding provokes the scenario of a catastrophic extinction related to the impact of a large extraterrestrial object at the K-T boundary. However, supporting sedimentological evidence does not yet exist in Jamaica. The critical intervals are either unrecognized within thick volcanoclastic successions that buried the carbonate platforms, or hidden beneath Tertiary limestone cover. In the Mediterranean and Middle Eastern Tethys deposits, a reduction in diversity and abundance of rudists is noted as early as the Campanian, and this decline was probably related to a loss of habitat, although precise stratigraphic control is available only for a few occurrences (Philip, 1998). Consequently, a clear pattern of extinction has not yet emerged. Our data show that the history of Late Cretaceous carbonate platforms can be traced with considerable precision by Sr isotope stratigraphy and that the global pattern of timing as well as the causes of the demise of the distinctive ecosystems of late Mesozoic tropical shallow-water environments must be reevaluated.

ACKNOWLEDGMENTS

Supported by Deutsche Forschungsgemeinschaft grant Ste 670/6-2 (to Steuber). We thank J.M. McArthur for providing samples to test for interlaboratory biases of Sr isotope analysis. Helpful reviews by J.M. McArthur and P. Ward contributed to improve this work.

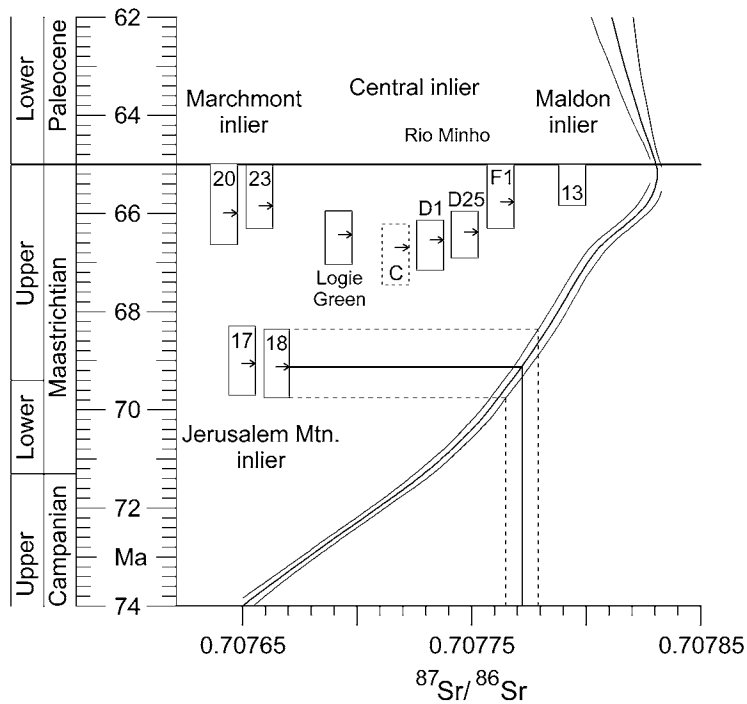


Figure 5. Variation of $^{87}\text{Sr}/^{86}\text{Sr}$ values in Cretaceous seawater (bold curve; thin curves are 95% confidence limits [Howarth and McArthur, 1997; McArthur et al., 2001]), and numerical ages (arrows) derived from Sr isotope stratigraphy of low-Mg calcite of rudist shells from localities of *Titanosarcolithes* limestones of Jamaica (Table 1). Vertical bars indicate age ranges due to limits of analytical precision and statistical uncertainty of seawater curve, as shown by broken lines for data of locality 18. Only upper age limit is indicated for locality 13; mean $^{87}\text{Sr}/^{86}\text{Sr}$ value of samples from this locality is above value currently accepted for latest Maastrichtian seawater. Time scales of Cande and Kent (1995) and Obradovich (1993) for 62–70 and 70–74 Ma, respectively.

REFERENCES CITED

Alvarez, L.W., Alvarez, W., Asaro, F., and Michel, H.V., 1980, Extraterrestrial cause for the Cretaceous-Tertiary extinction: *Science*, v. 208, p. 1095–1108.

Cande, S.C., and Kent, D.V., 1995, Revised calibration of the geomagnetic polarity time scale for the Late Cretaceous and Cenozoic: *Journal of Geophysical Research*, v. 100, p. 6093–6095.

Chubb, L.J., 1971, Rudists of Jamaica: *Palaeontographica Americana*, v. 45, p. 157–257.

Coates, A.G., 1965, A new section in the Maastrichtian Guinea Corn Formation near Crawle River, Clarendon: *Geological Society of Jamaica Journal*, v. 7, p. 28–33.

Gunter, G., 2002, Two very fossiliferous rudist sites from the Marchmont Inlier, northwestern Jamaica: *Caribbean Journal of Earth Sciences*, v. 36, p. 21–26.

Hazel, J.E., and Kamiya, T., 1993, Ostracode biostratigraphy of the *Titanosarcolithes*-bearing limestones and related sequences of Jamaica, in Wright, R.M., and Robinson, E., eds., *Biostratigraphy of Jamaica*: Geological Society of America Memoir 182, p. 65–76.

Howarth, R.J., and McArthur, J.M., 1997, Statistics for strontium isotope stratigraphy. A robust LOWESS fit to the marine Sr-isotope curve for 0–206 Ma, with look-up table for the derivation of numerical age: *Journal of Geology*, v. 105, p. 441–456.

Jiang, M.-J., and Robinson, E., 1986, Calcareous nanofossils and larger foraminifera in Jamaican rocks of Cretaceous to early Eocene age, in Ahmad, R., ed., *Proceedings of a Workshop*

on the status of Jamaican geology: *Geological Society of Jamaica*, p. 24–51.

Johnson, C.C., and Kauffman, E.G., 1996, Maastrichtian extinction patterns of Caribbean province rudistids, in MacLeod, N., and Keller, G., eds., *Cretaceous-Tertiary mass extinctions: Biotic and environmental changes*: New York, Norton and Co., p. 231–273.

Johnson, C.C., and Kauffman, E.G., 2001, Cretaceous evolution of reef ecosystems—A regional synthesis of the Caribbean tropics, in Stanley, G.D., ed., *The history and sedimentology of ancient reef systems*: New York, Kluwer Academic/Plenum Publishers, p. 311–349.

Johnson, C.C., Barron, E.J., Kauffman, E.G., Arthur, M.A., Fawcett, P.J., and Yasuda, M.K., 1996, Middle Cretaceous reef collapse linked to ocean heat transport: *Geology*, v. 24, p. 376–380.

Kauffman, E.G., and Sohl, N.F., 1973, Structure and evolution of Antillean Cretaceous rudist frameworks: *Verhandlungen der Naturforschenden Gesellschaft in Basel*, v. 84, p. 399–467.

MacLeod, N., Rawson, P.F., Forey, P.L., Banner, F.T., Boudagher-Fadel, M.K., Bown, P.R., Burnett, J.A., Chambers, P., Culver, S., Evans, S.E., Jeffery, C., Kaminski, M.A., Lord, A.R., Milner, A.C., Milner, A.R., Morris, N., Owen, E., Rosen, B.R., Smith, A.B., Taylor, P.D., Urquhart, E., and Young, J.R., 1997, The Cretaceous-Tertiary biotic transition: *Geological Society of London Journal*, v. 154, p. 265–292.

MacLeod, K.G., Huber, B.T., and Fullagar, P.D.,

2001, Evidence for a small (~ 0.000030) but resolvable increase in seawater $^{87}\text{Sr}/^{86}\text{Sr}$ ratios across the Cretaceous-Tertiary boundary: *Geology*, v. 29, p. 303–306.

McArthur, J.M., 1994, Recent trends in strontium isotope stratigraphy: *Terra Nova*, v. 6, p. 331–358.

McArthur, J.M., Thirlwall, M.F., Engkilde, M., Zinsmeister, W.J., and Howarth, R.J., 1998, Strontium isotope profiles across K/T boundary sequences in Denmark and Antarctica: *Earth and Planetary Science Letters*, v. 160, p. 179–192.

McArthur, J.M., Crame, J.A., and Thirlwall, M.F., 2000, Definition of Late Cretaceous stage boundaries in Antarctica using strontium isotope stratigraphy: *Journal of Geology*, v. 108, p. 623–640.

McArthur, J.M., Howarth, R.J., and Bailey, T.R., 2001, Strontium isotope stratigraphy: LOWESS version 3: Best-fit to the marine Sr-isotope curve for 0–509 Ma and accompanying look-up table for deriving numerical age: *Journal of Geology*, v. 109, p. 155–170.

Mitchell, S.F., 1999, Stratigraphy of the Guinea Corn Formation (Upper Cretaceous) at its type locality in the Rio Minho between Grantham and Guinea Corn, northern Clarendon, Jamaica: *Geological Society of Jamaica Journal*, v. 33, p. 1–12.

Mitchell, S.F., and Blissett, D., 2001, Lithostratigraphy of the Late Cretaceous to ?Paleocene succession in the western part of the Central inlier of Jamaica: *Caribbean Journal of Earth Science*, v. 35, p. 19–31.

Obradovich, J.D., 1993, A Cretaceous time scale, in Caldwell, W.G.E., and Kauffman, E.G., eds., *Evolution of the Western Interior foreland basin*: Geological Association of Canada Special Paper 39, p. 379–396.

Philip, J., 1998, Biostratigraphie et paléobiogéographie des rudistes: Évolution des concepts et progrès récents: *Bulletin de la Société Géologique de France*, v. 169, p. 689–708.

Smit, J., 1999, The global stratigraphy of the Cretaceous-Tertiary boundary impact ejecta: *Annual Review of Earth and Planetary Sciences*, v. 27, p. 75–113.

Steuber, T., 1999, Isotopic and chemical intra-shell variations in low-Mg calcite of rudist bivalves (Mollusca: Hippuritacea)—Disequilibrium fractionations and Late Cretaceous seasonality: *International Journal of Earth Sciences*, v. 88, p. 551–570.

Steuber, T., 2001, Strontium isotope stratigraphy of Turonian–Campanian Gosau-type rudist formations in the Northern Calcareous and Central Alps (Austria and Germany): *Cretaceous Research*, v. 22, p. 429–441.

Steuber, T., 2002, A plate tectonic control on the evolution of Cretaceous platform-carbonate production: *Geology*, v. 30, p. 259–262.

Veizer, J., 1983, Trace elements and isotopes in sedimentary carbonates, in Reeder, R.J., ed., *Carbonates: Mineralogy and chemistry*: Mineralogical Society of America Reviews in Mineralogy, v. 11, p. 265–299.

Veizer, J., Buhl, D., Diener, A., Ebner, S., Podlaha, O.G., Bruckschen, P., Jasper, T., Korte, C., Schaaf, M., Ala, D., and Azmy, K., 1997, Strontium isotope stratigraphy: Potential resolution and event correlation: *Palaeogeography, Palaeoclimatology, Palaeoecology*, v. 132, p. 65–77.

Manuscript received March 22, 2002
 Revised manuscript received July 1, 2002
 Manuscript accepted July 16, 2002

Printed in USA